



# Western Australian Aboriginal Immunisation Schedule



## Childhood

Age/Eligibility	Antigen/Antibody	Brand(s)	Important information
Birth to <7 days	Nirsevimab*	Beyfortus®	Aboriginal babies born 1/5/24 to 31/3/25 and residing in, or about to imminently reside in, the Kimberley or Pilbara region
	Hepatitis B	H-B-Vax® II Paed or Engerix® B Paed	
6–8 weeks	DTPa-hepB-IPV-Hib	Infanrix® hexa or Vaxelis®	Oral dose 1: Must be given by 14 weeks of age
	13vPCV	Prevenar® 13	
	Rotavirus	Rotarix®	
	MenACWY*	Nimenrix®	
	MenB	Bexsero®	
4 months	DTPa-hepB-IPV-Hib	Infanrix® hexa or Vaxelis®	Oral dose 2: Must be given by 24 weeks of age
	13vPCV	Prevenar® 13	
	Rotavirus	Rotarix®	
	MenACWY*	Nimenrix®	
	MenB	Bexsero®	
6 months	DTPa-hepB-IPV-Hib	Infanrix® hexa or Vaxelis®	
	13vPCV	Prevenar® 13	
MRC	MenB	Bexsero®	<a href="#">Prophylactic paracetamol</a> recommended
	MenACWY	Nimenrix®	
12 months	MMR	MMRII® or Priorix®	<a href="#">Prophylactic paracetamol</a> recommended
	13vPCV	Prevenar® 13	
	MenACWY	Nimenrix®	
	MenB	Bexsero®	
MRC	Hepatitis B	H-B-Vax® II Paed or Engerix® B Paed	<32 weeks gestation or <2000g birth weight
All children >12 months with MRC	Children diagnosed with MRC at >12 months of age require 1 dose of 13vPCV at diagnosis, followed by a first dose of 23vPPV, 2 to 12 months later or at 4 years of age, whichever is later. A second dose of 23vPPV is given 5 years later. See <a href="#">Australian Immunisation Handbook</a>		
18 months	DTPa	Infanrix® or Tripacel®	Do not administer MMRV as dose 1 of a measles-containing vaccine if <4 years of age
	Hib	ActHIB®	
	MMRV	Priorix-Tetra®	
	Hepatitis A	Vaqta® Paed/Adol	
<2 years	Catch-up for MenB is available for Aboriginal children <2 years of age		
4 years	DTPa-IPV	Quadracel® or Infanrix®IPV	Not required if previously received 2 doses (first dose at age ≥12 months) at least 6 months apart
	Hepatitis A	Vaqta® Paed/Adol	
	23vPPV	Pneumovax23®	

See footnotes at bottom of page 3

# Respiratory Syncytial Virus (RSV)

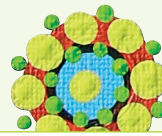
Age/Eligibility	Antigen/Antibody	Brand	Important information
All Aboriginal children aged less than 19 months who have not previously received nirsevimab	Nirsevimab*	Beyfortus®	<p>Dosage:</p> <p>For any Aboriginal infant less than 8 months of age who has not previously received nirsevimab, dosage is determined by weight (50mg for infants &lt;5kg and 100mg for infants ≥5kg).</p> <p>For all Aboriginal children and those with MRC aged 8 months to less than 19 months who have not previously received nirsevimab, dosage is 200mg (2x100mg doses).</p> <p>For list of MRC please see <a href="#">Respiratory Syncytial Virus (RSV) immunisation</a>.</p>

## Adolescent and adult

Age/Eligibility	Antigen	Vaccine brand(s)	Important information
All adolescents and adults with MRC	Adolescents and adults diagnosed with MRC require 1 dose of 13vPCV at diagnosis, followed by a first dose of 23vPPV, 2 to 12 months later. A second dose is given at least 5 years later. People of all ages with specified MRC are eligible for MenACWY, MenB and Hib vaccines.		
Year 7	HPV	Gardasil®9	Catch-up for adolescents <26 years of age
	dTpa	Boostrix® or Adacel®	
Year 10	MenACWY	Nimenrix® or MenQuadfi	
≥18 years	<b>MRC</b> Herpes-zoster	Shingrix®	2 doses, given 1–2 months apart
Pregnant	dTpa	Boostrix® or Adacel®	Each pregnancy, ideally between 20–32 weeks
≥20 years	Hepatitis B	Engerix® B	For non-immune persons. See the <a href="#">Australian Immunisation Handbook</a> for recommendations and timing of doses
≥50 years	13vPCV	Prevenar® 13	See the <a href="#">Australian Immunisation Handbook</a> for timing of doses
	23vPPV	Pneumovax23®	
	Herpes-zoster	Shingrix®	2 doses, given 2–6 months apart
Born after 1965*	MMR	Priorix®	Give 1 or 2 doses as required. Whilst serology is not routinely recommended, see <a href="#">WA adult measles vaccination program</a> for details.

# Seasonal influenza

Age/Eligibility	Vaccine brand(s)	Important information
6 months to <5 years	Vaxigrip®Tetra, Fluarix®Tetra	For children <9 years or persons with MRC, 2 doses required 1 month apart in the first year they receive influenza vaccine. One dose annually in subsequent years. For information on specified MRC see the <a href="#">Australian Immunisation Handbook</a> or annual <a href="#">ATAGI advice</a> on seasonal influenza vaccines.
5 years to <65 years	Vaxigrip®Tetra, Fluarix®Tetra, Flucelvax®Quad	
Pregnancy	Vaxigrip®Tetra, Fluarix®Tetra, Flucelvax®Quad	Each pregnancy, any trimester
≥65 years	Flud® Quad	Preferentially use adjuvanted QIV
WA Health staff <sup>^*</sup>	Fluarix®Tetra, FluQuadri®	For ≥65 years use Flud® Quad



## Using the term Aboriginal

Within Western Australia, the term Aboriginal is used in preference to Aboriginal and Torres Strait Islander, in recognition that Aboriginal people are the original inhabitants of Western Australia. Aboriginal and Torres Strait Islander may be referred to in the national context and Indigenous may be referred to in the international context. No disrespect is intended to our Torres Strait Islander colleagues and community.

## References

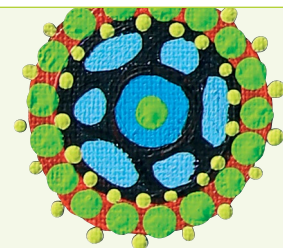
\* Refers to WA State-funded Programs.

^ Refers to all persons attending WA Health staff influenza vaccination services.

**MRC** refers to people with medical risk conditions. Refer to the current online edition of The [Australian Immunisation Handbook](#) for all medical risk conditions, recommendations and timing of doses.

**Persons aged <20 years** can catch-up scheduled vaccines, refer to [Australian Immunisation Handbook](#) for timing of doses.

This document can be made available in alternative formats on request.



Produced by the Communicable Disease Control Directorate  
© Department of Health 2024

Copyright to this material is vested in the State of Western Australia unless otherwise indicated. Apart from any fair dealing for the purposes of private study, research, criticism or review, as permitted under the provisions of the *Copyright Act 1968*, no part may be reproduced or re-used for any purposes whatsoever without written permission of the State of Western Australia.